

TRUCHECK FLEXHITE DPM™ DOME

DAPRA

Adjustable height and dome lighting for curved parts, shiny surfaces and dot peen marks.

WEBCAN
BARCODE VERIFIERS
A PART OF
COGNEX

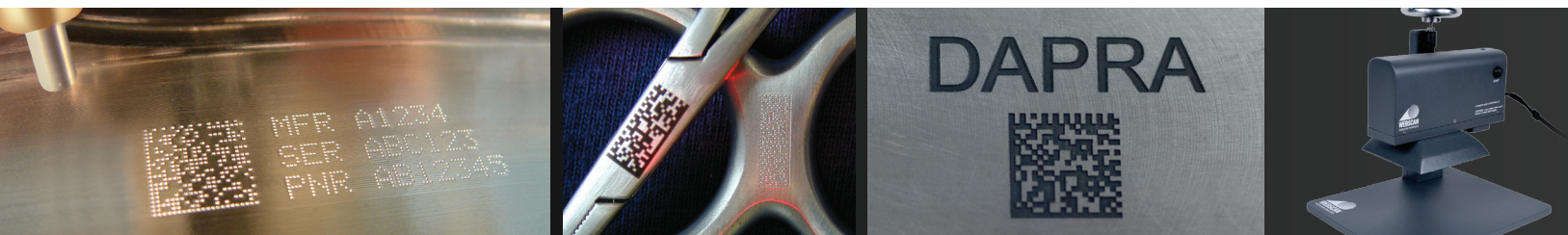


Model Shown:
TRUCHECK FLEXHITE DPM

The TruCheck FlexHite DPM Dome is built to handle your most demanding barcode verification challenges, including reliable, accurate performance on curved and textured surfaces.

The adjustable height of this system makes it perfect for verifying 1D and 2D symbols even when they are recessed or otherwise hard to reach with other verifiers. Simply place your part under the camera head and adjust the height with the manual turn-wheel. The software automatically detects the laser positioning indicator for perfect focus.

Dome lighting gives you the ability to properly illuminate barcodes on curved parts by lighting three times the surface area as the standard Webscan FlexHite verifier.



- Adjust the working distance to accommodate any part.
- Large field of view: 0.98" x 0.70" (25mm x 18mm).
- Verify 1D and 2D symbols with X-dimensions as small as 6.0 mil.
- Nine different machine configurations are available in the FlexHite family. Choice of 45° lighting for ISO 15415 or AIM DPM (45°, 30° or 90°) makes it perfect for virtually any direct part marking application, including dot peen and laser-etched UID symbols.
- Dome system's 90° lighting is ideal for curved/shiny surfaces and dot peen markings.
- Meets DOD MIL-STD130 for UID compliance and UDI FDA regulations. Meets GS1 standards and complies with ISO/IEC standards for 1D and 2D symbol quality measurement and accuracy compliance.
- All Webscan systems are calibrated and fully traceable to NIST standards.

Physical Characteristics:

Dimensions (HxWxD): 10" x 12" x 14"

Weight: 10 lbs.

Maximum part height: 5"

Environment:

Temperature: 0° - 104° F

Humidity: 5% - 95% noncondensing

Conformance:

ISO 15415, 15426-2; MIL-STD 130 (L through N-Chg1); ISO 16022, 18004, 16023, 24778; AIQG AS9132; AIM DPM (ISO TR 29158)

DAPRA
MARKING SYSTEMS

Headquarters: 66 Granby St., Bloomfield, CT 06002 ♦ 860-286-8728 ♦ Fax: 860-242-3017
Midwest Office: 4861 American Rd., Suite A-B, Rockford, IL 61109

800-442-6275 ♦ www.DapraMarking.com ♦ sales@DapraMarking.com