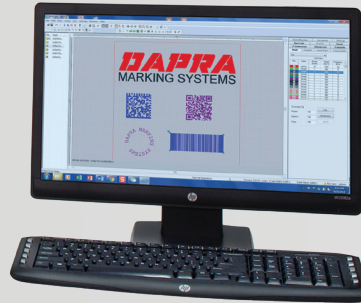




DAPRA® 400i

CLASS 1 PULSED FIBER MARKING LASER



COMPACT

Turnkey all-in-one workstations

FLEXIBLE

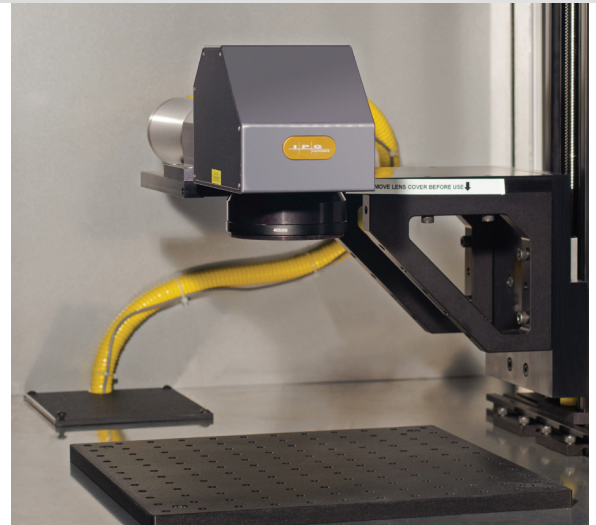
4-axis marking capability

USER FRIENDLY

Easy-to-use software

400i LASER WORKSTATIONS INCLUDE:

- Manual Z-axis
- Compact controls
- Marking head with focus finder
- Sliding door with interlock
- Viewing window
- Start/stop buttons
- Interlocked rear panel
- Powerful laser software suite:
 - Serialization
 - Date coding
 - Import logos and graphics
 - Create linear, angular and radial text
 - Data Matrix codes
 - UID and UDI syntax
 - QR codes
 - Linear barcodes



OPTIONS:

- Rotary D-axis for marking round parts
- Industrial fume extractors
- Programmable Z-axis
- 2D, UID and 1D barcode readers and verifiers
- Power door
- Side access panel for marking long components
- Freestanding cabinets available



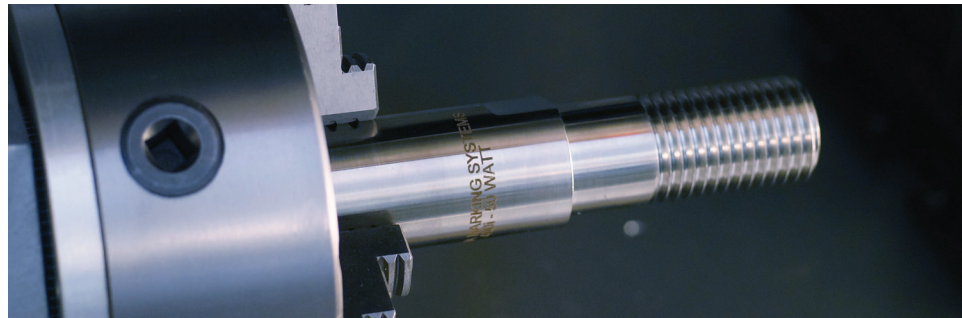
DAPRA® EQ1

LASER SOURCE SPECIFICATIONS

LASER	Nominal Power	Output Power Range	Frequency (Modulation)	Laser Source	Pulse Width	Wavelength	Cooling	Aiming & Focus Beam	Interface
EQ1-20IF	20 Watts	10 - 100%	2 - 200 kHz	Fiber	100 ns	1064 nm	Air	635 - 670 nm	Ethernet, RS232, USB
EQ1-30IF	30 Watts	10 - 100%	2 - 200 kHz	Fiber	100 ns	1064 nm	Air	635 - 670 nm	Ethernet, RS232, USB
EQ1-50IF	50 Watts	10 - 100%	2 - 200 kHz	Fiber	100 ns	1064 nm	Air	635 - 670 nm	Ethernet, RS232, USB
EQ1-100IF	100 Watts	10 - 100%	2 - 200 kHz	Fiber	100 ns	1064 nm	Air	635 - 670 nm	Ethernet, RS232, USB

LENS CONFIGURATIONS:

F-THETA LENS	Marking Area
163	100 x 100 mm
254	170 x 170 mm
330	205 x 205 mm
420	300 x 300 mm



ALSO AVAILABLE:

CLASS 4 SOLUTIONS

- Mark both small parts or large parts without the limitations of a cabinet
- Manual or programmable Z-axis
- Rotary options
- Custom configurations
- Laser barriers

Eyewear and other safety restrictions required.

