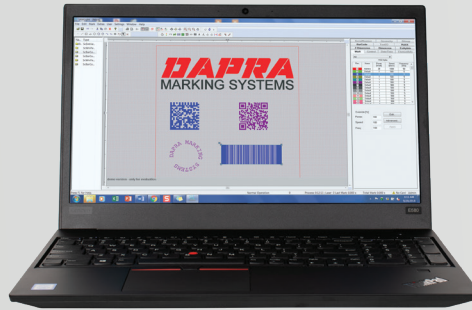


DAPRA[®] 200i

CLASS 1 PULSED FIBER MARKING LASER



COMPACT

Ideal for tags & small parts

TURNKEY

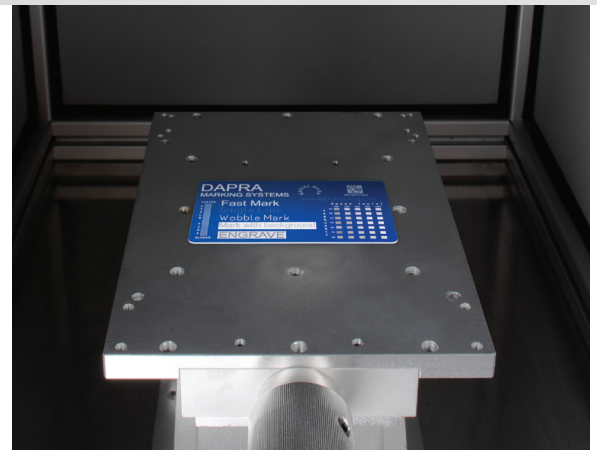
All-in-one workstation

USER FRIENDLY

Easy-to-use software

200i LASER WORKSTATIONS INCLUDE:

- Compact cabinet and controls
- Marking head with focus finder
- Lab jack to lift parts to appropriate height for marking (163 lens only)
- Door with interlock
- Viewing window
- Start/stop buttons
- Powerful laser software suite:
 - Import logos and graphics
 - Create linear, angular and radial text
 - Serialization - Date coding
 - Data Matrix codes - UID and UDI syntax
 - QR codes - Linear barcodes



OPTIONS:

- Rotary D-axis for marking round parts
- Industrial fume extractors
- 2D, UID and 1D barcode readers and verifiers
- Freestanding cabinets available

MARKING CAPACITY:

F-THETA LENS	Height to Lens	Lens Working Focal Distance	Max. Part Height	Max. Part Height with Lab Jack	Marking Area
163	15.1"	7.4"	7.7"	4.4"	4.33" x 4.33"
254	15.1"	11.3"	3.8"	N/A	6.69" x 6.69"



DAPRA[®] EQ1

LASER SOURCE SPECIFICATIONS

LASER	Nominal Power	Output Power Range	Frequency (Modulation)	Laser Source	Pulse Width	Wavelength	Cooling	Aiming & Focus Beam	Interface
EQ1-20IF	20 Watts	10 - 100%	2 - 200 kHz	Fiber	100 ns	1064 nm	Air	635 - 670 nm	Ethernet, RS232, USB
EQ1-30IF	30 Watts	10 - 100%	2 - 200 kHz	Fiber	100 ns	1064 nm	Air	635 - 670 nm	Ethernet, RS232, USB
EQ1-50IF	50 Watts	10 - 100%	2 - 200 kHz	Fiber	100 ns	1064 nm	Air	635 - 670 nm	Ethernet, RS232, USB

