

MP MOBILE SERIES

Cordless Dot Peen System

INDUSTRIAL GRADE



DATAMARK

ENGINEERED TO GET THE JOB DONE!

Tough industrial environments require a rugged marker that's easy to operate. This cordless workhorse leverages the latest dot peen technology for maximum portability and reliability. Mark tubes, frames, and profiles directly at the workpiece, or mount it for precise marking of smaller parts.

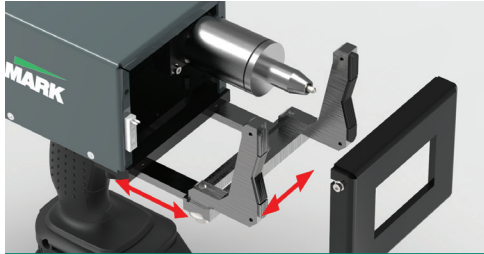
Robust Metal Housing

Built to withstand everyday abuse with a steel housing and industrial-grade components.



Industry-Leading Performance

Capable of deep marking of metals up to 62 HRC, with adjustable depth.



Quick-Adjust Front Support Legs

Adjustable, removable legs to access tight spots and mark curved surfaces. Non-slip flat front mask included.



Integrated Point-of-Use LED Lighting

Ensure accurate mark placement while working in dark or difficult-to-reach areas.

Comfortable Ergonomics

Lightweight, balanced design featuring a non-slip grip handle with multifunction trigger (on/off and start/stop).

High-Performance Li-ion Battery

High-capacity rechargeable battery for more than 3 hours of continuous operation. Keep a spare on hand for quick swap-out.

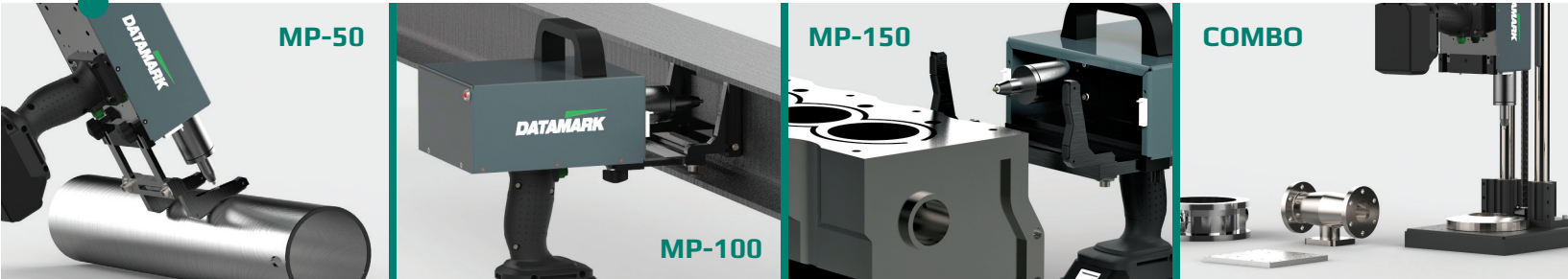


Wireless Control

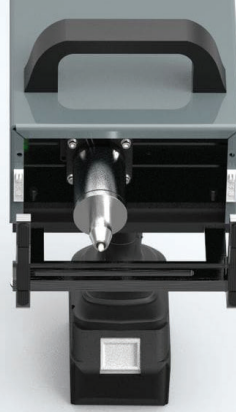
Forget bulky controllers and complicated software. Run your marker directly from a phone, tablet, or laptop with an intuitive user interface that will have your team up and running in minutes.

Choice of Size & Configuration

Three marking window sizes are available to fit your requirements. All models can be quickly mounted on our optional column and base for benchtop marking of machined parts and data plates.



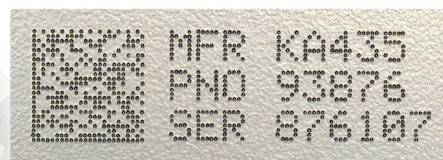
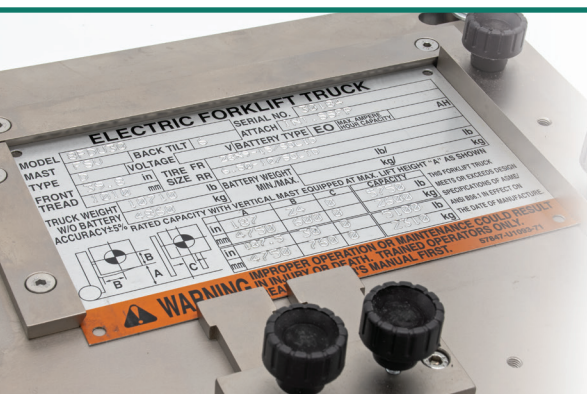
SCAN TO
DOWNLOAD
& DEMO



DATAMOBIL™ SOFTWARE

DataMobil™ puts the marking functions you need to support day-to-day operations right at your fingertips. Pair your marker to a phone, tablet, or PC and start marking text, logos, and 2D codes in minutes via an intuitive, icon-driven interface.

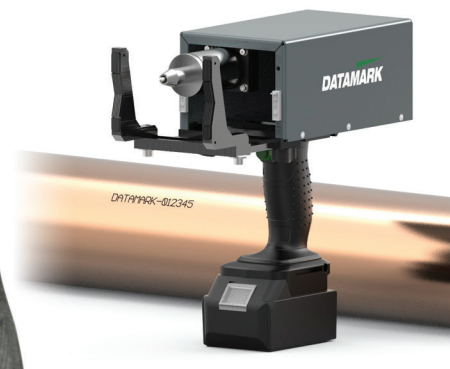
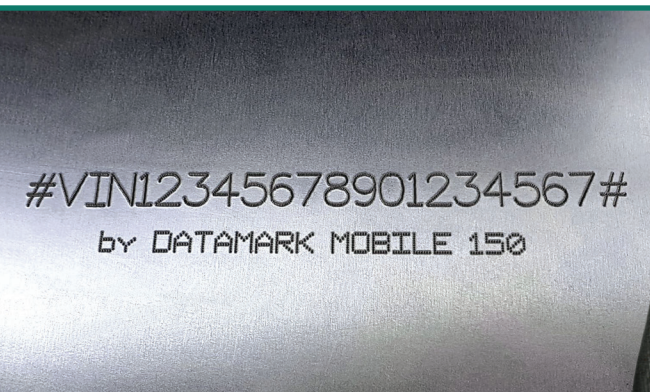
- Available for Android™/iOS touchscreen devices and Windows PCs. Easy wireless connectivity to your marker.
- Quickly generate 2D data matrix and QR codes.
- Import logos and images (.PLT files).
- Multiple marking fonts available – basic (fastflan), dot matrix, and more.
- Automatic marking of serial/VIN numbers, dates, time, and shift codes.
- Supports barcode scanning for automatic data entry.
- Save and re-use your layouts, with unlimited file storage on your control device.



MAKE IT A COMBO

Maximize your flexibility by pairing your Mobile marker with our optional column and base mounting system. A “Combo” system in benchtop configuration allows for precise marking of smaller machined parts and metal data plates.

- Quick, easy no-tools changeover between hand-held and benchtop configurations.
- Robust construction.
- Max. part height:
 - MP-50: 8.9” (225mm)
 - MP-100: 9.8” (250mm)
 - MP-150: 9.8” (250mm)
- Nameplate fixture accessory allows for easy, accurate marking of metal plates up to 6.4” x 5.1”.



SPECIFICATIONS



MP-50 Mobile

MP-50-MOB

The most compact battery-powered marker available.



MP-100 Mobile

MP-100-MOB

An outstanding all-purpose unit for day-to-day use.



MP-150 Mobile

MP-150-MOB

An oversized unit for large pipes, tubes, and frames. Ideal for marking VIN numbers.

MODEL:	MP-50-MOB	MP-100-MOB	MP-150-MOB
Marking Technology:	Electric solenoid		
Marking Window:	1.97" x 1.18" (50 x 30mm)	3.94" x 1.18" (100 x 30mm)	5.91" x 1.18" (150 x 30mm)
Marking Depth:	.001" to .015" (adjustable)		
Power Source:	Rechargeable 18v Li-ion battery – provides 3 hours of operation on a full charge		
Material Types:	Metal/alloys (steel, aluminum, copper, etc.), plastic (PVC, acrylic, etc.), glass		
Material Hardness (Max.):	62 HRC		
Gun Dimensions (W x D x H):	4.5" x 11" x 11.6"	6.5" x 11" x 10.6"	8.4" x 11" x 11.6"
Gun Weight (incl. Battery):	8 lb 6 oz	9 lb 4 oz	9 lb 15 oz
Interface:	Smartphone, tablet, or PC – Android, iOS or Windows operating system		
Control Connection:	Wi-Fi		
Marking Types:	Straight, angled, radial		
Marking Data:	Capable of marking logos, 2D codes, QR codes, serial numbers, shift codes, and more		
Cycle Start:	Trigger activation		
Warranty:	12 Months		

STANDARD OFFERING INCLUDES:

- Self-contained cordless marking machine
- Detachable, anti-slip flat front mask
- Rechargeable, swappable Li-ion battery
- Battery charger: 110-240v, 50-60 Hz
- DataMobil™ software package

REPLACEMENT PARTS & ACCESSORIES



90° Tip –
MC47590

120° Tip –
MC475120

Marking Styluses
Dimensions: 4mm x 75mm

Stylus Spring
MC00200

**4mm Nosepiece
Assembly**
MCNP438-A

Adjustable Column & Base
MF00400-P

Mount your portable unit for precise benchtop mounting. Great for small parts and data plates. Provides 15.75" (400mm) of spindle travel.

Dimensions: 11.2" W x 25" H x 12.8" D

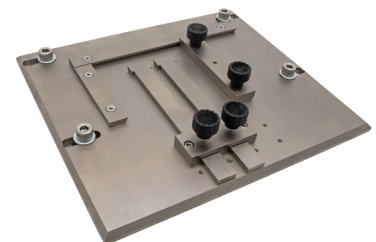


Spare Li-ion Battery
Battery & Charger – ME10000
Battery Only – ME10005



Tablet, Case & Screen Cover
ME90600

Industrial-grade tablet pre-installed with DataMobil touchscreen marking software. Includes protective case and screen cover.



Nameplate Marking Fixture
MF00100

Mounting plate for accurate marking of metal tags, data plates, name plates, etc. Securely attaches to column and base or benchtop unit.

Max. Plate Size: 6.4" x 5.1"



**Providing permanent marking and
traceability solutions for nearly 40 years.**

www.DapraMarking.com

66 Granby Street, Bloomfield, CT 06002

800-442-6275 | 860-286-8728

sales@dapramarking.com | service@dapramarking.com