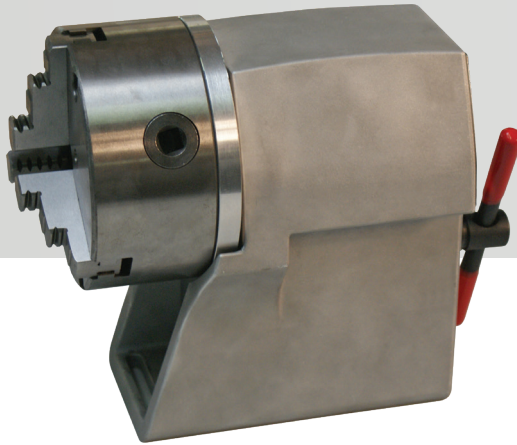


# DAPRA®

## HEAVY-DUTY ROTARY D-AXIS

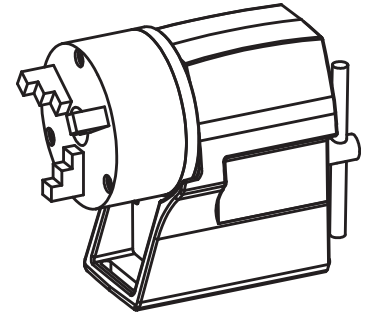
WITH MANUAL 3-JAW CHUCK



The rotary device facilitates marking round or cylindrical parts radially or axially on the part diameter.

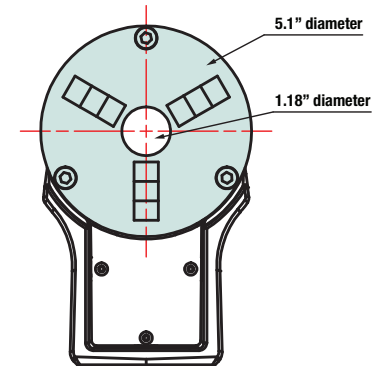
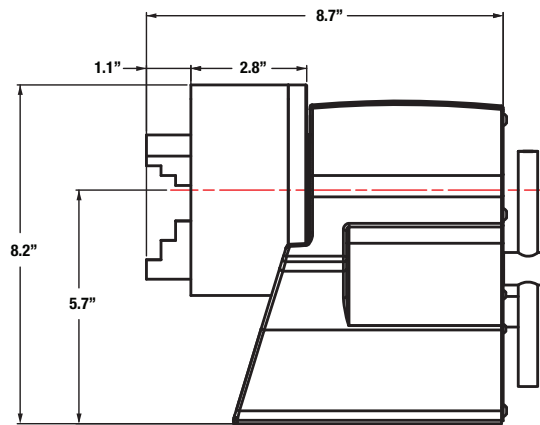
### DIMENSIONS:

- L x W x H: 9.85" x 5.12" x 8.23"
- Weight: 26.5 lbs.



### CAPACITY:

- 5.1" diameter chuck
- Marks parts up to 22 lbs. with a diameter of 3.15"
- With ID jaws can hold parts 1.57" to 5.1"
- With OD jaws can hold parts .118" to 1.57"
- Thru hole chuck allows bars up to 1.18"



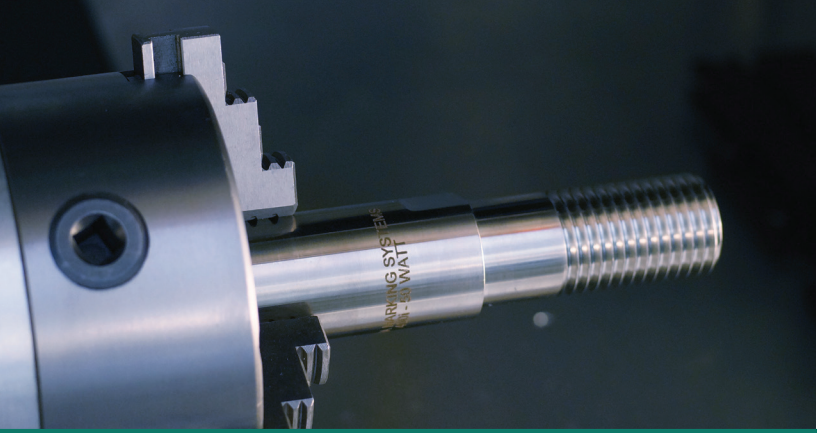
### INCLUDES:

- Internal jaws
- External jaws
- Connection cable
- Chuck key

**DAPRA®**  
**MARKING SYSTEMS**

Headquarters: 66 Granby St., Bloomfield, CT 06002 ♦ 860-286-8728 ♦ Fax: 860-242-3017  
Midwest Technical Center: 4861 American Rd., Suite A-B, Rockford, IL 61109

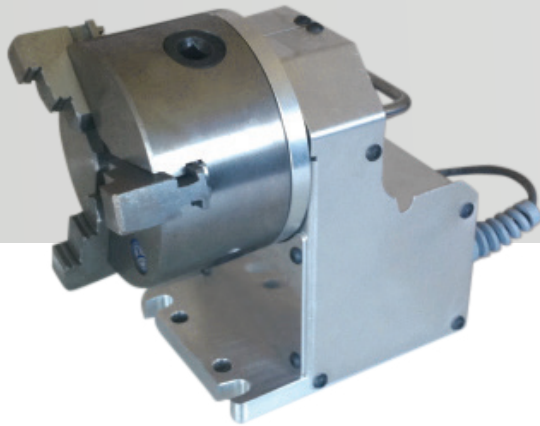
800-442-6275 ♦ [www.DapraMarking.com](http://www.DapraMarking.com) ♦ [sales@DapraMarking.com](mailto:sales@DapraMarking.com)



# DAPRA®

## STANDARD ROTARY D-AXIS

WITH MANUAL 3-JAW CHUCK



The rotary device facilitates marking round or cylindrical parts radially or axially on the part diameter.

### DIMENSIONS:

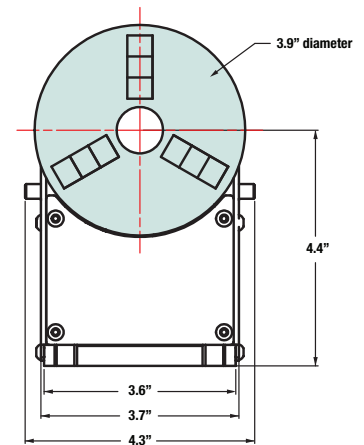
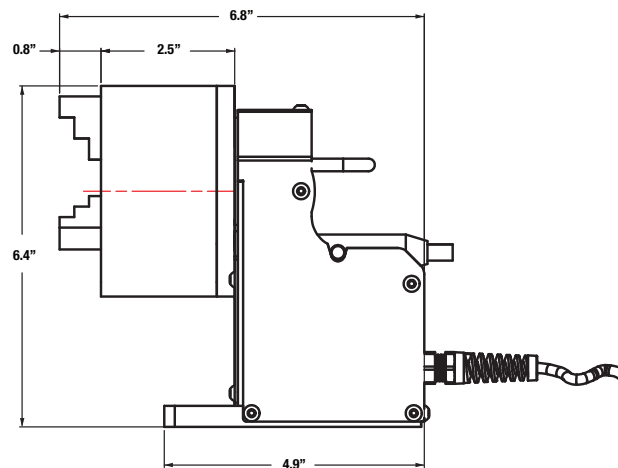
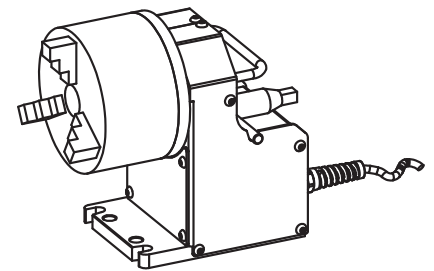
- L x W x H: 6.85" x 4.29" x 6.37"
- Weight: 10.1 lbs.

### CAPACITY:

- 3.9" diameter chuck
- Marks parts up to 11 lbs.
- With ID jaws can hold parts 1.18" to 3.54"
- With OD jaws can hold parts .078" to 1.18"

### INCLUDES:

- Internal jaws
- External jaws
- Connection cable
- Chuck key



**DAPRA®**  
**MARKING SYSTEMS**

Headquarters: 66 Granby St., Bloomfield, CT 06002 ♦ 860-286-8728 ♦ Fax: 860-242-3017  
Midwest Technical Center: 4861 American Rd., Suite A-B, Rockford, IL 61109

800-442-6275 ♦ [www.DapraMarking.com](http://www.DapraMarking.com) ♦ [sales@DapraMarking.com](mailto:sales@DapraMarking.com)